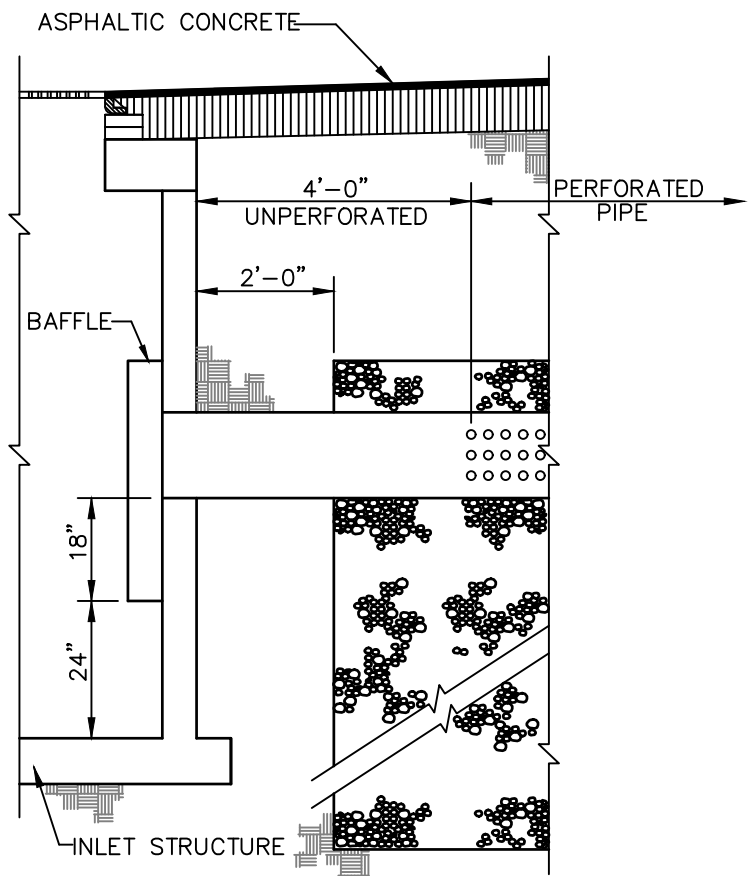


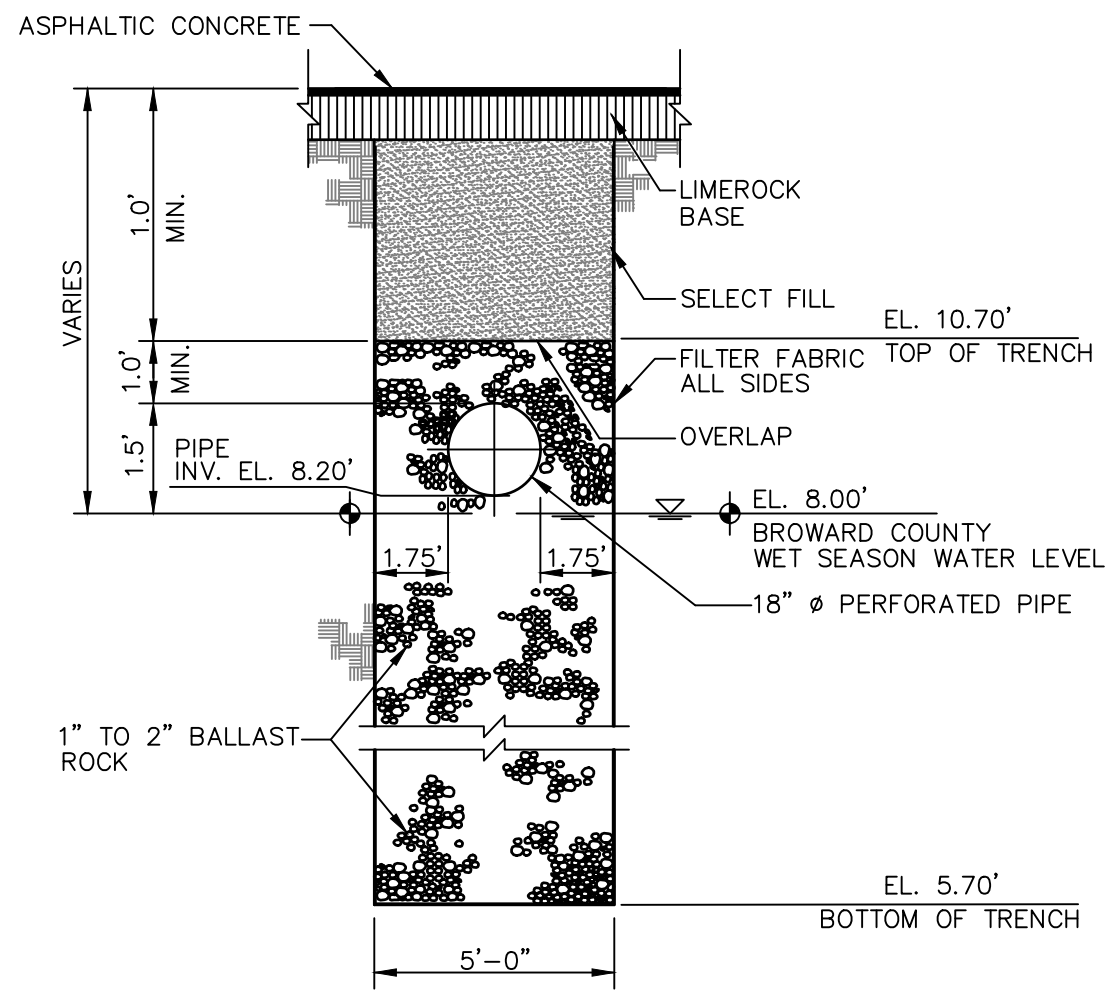
C:\Users\lmpg01\My Shares\Syn0002\Civil\DWG\C-9.0 GRADING AND DRAINAGE DETAILS.dwg 10/15/2025 10:48pm



- NOTES:
1. PROVIDE BAFFLE WHEREVER PIPE ENTERS FRENCH DRAIN.
  2. BAFFLE SHALL BE AS SHOWN ON DETAIL IN THIS SHEET OR APPROVED EQUAL.
  3. SUMP 2'-0" (TYP.) EXCEPT AT POLLUTION CONTROL STRUCTURES SUMP TO BE 3'-6".

**EXFILTRATION TRENCH  
CONNECTION DETAIL**

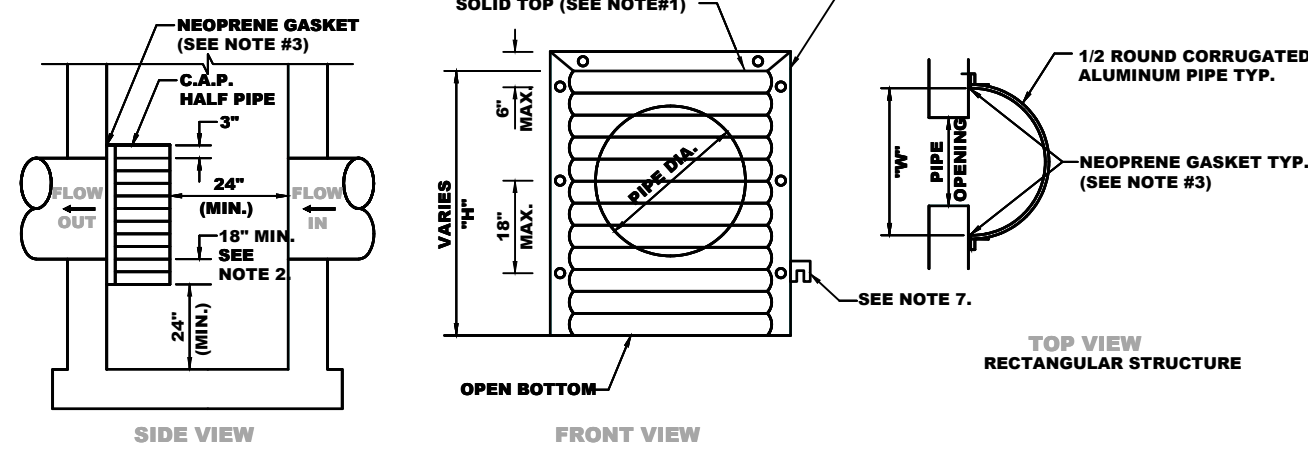
N.T.S.



NOTE: FILTER FABRIC PER FDOT INDEX NO. 199

**18" EXFILTRATION TRENCH SECTION (PRIVATE)**

N.T.S.



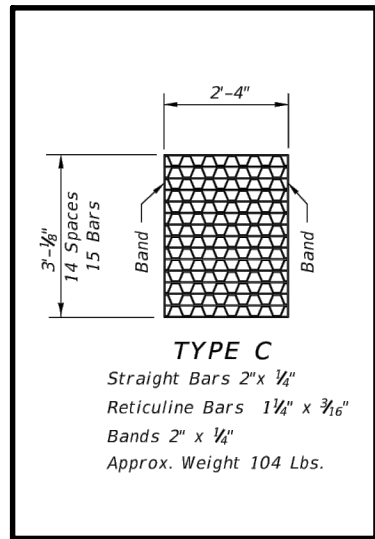
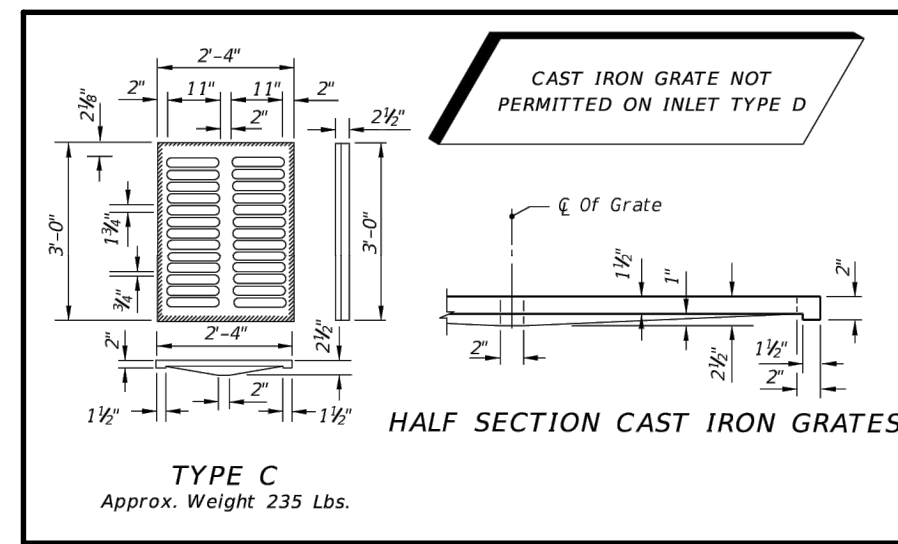
PIPE DIA.	W <sup>3</sup> (IN)	W <sup>2</sup> (IN)	T (GAUGE)	H (IN)
15"	21"	21"	16	VARIES
18"	24"	24"	16	VARIES
21"	30"	30"	16	VARIES
24"	36"	36"	16	VARIES
30"	36"	42"	14	VARIES
36"	42"	48"	14	VARIES
42"	48"	54"	14	VARIES
48"	54"	60"	14	VARIES
54"	60"	66"	14	VARIES

1. RECTANGULAR STRUCTURE  
2. ROUND STRUCTURE

- NOTES
1. ALUMINUM SHEET OF SAME THICKNESS (GAUGE) AS PIPE SHALL BE WELDED TO CLOSE OPENING AT THE TOP.
  2. THE BOTTOM ELEVATION OF THE POLLUTION RETARDANT BAFFLE MUST BE AT LEAST 1.5' BELOW CONTROL ELEVATION.
  3. NEOPRENE ADHESIVE BACKED GASKET, OR APPROVED EQUAL (1"X2") SHALL BE INSTALLED ON THE SIDES AND TOP ALL.
  4. IMBEDDION RETARDANT BAFFLE TO BE FASTENED IN PLACE WITH 3/4" STAINLESS STEEL "RED HEADS" OR APPROVED.
  5. ROUND EXFILTRATION TRENCHES SHALL HAVE A POLLUTION RETARDANT BAFFLE AT EACH CONNECTION POINT TO A BROWARD COUNTY WET SEASON WATER LEVEL.
  6. BRACKETING BRACKETS MAY BE ADDED TO FLAT BARS TO EASE INSTALLATION IN ROUND STRUCTURES. SPACING TO MATCH HOLES IN FLAT BARS.

**POLLUTION RETARDANT BAFFLE DETAIL**

N.T.S.

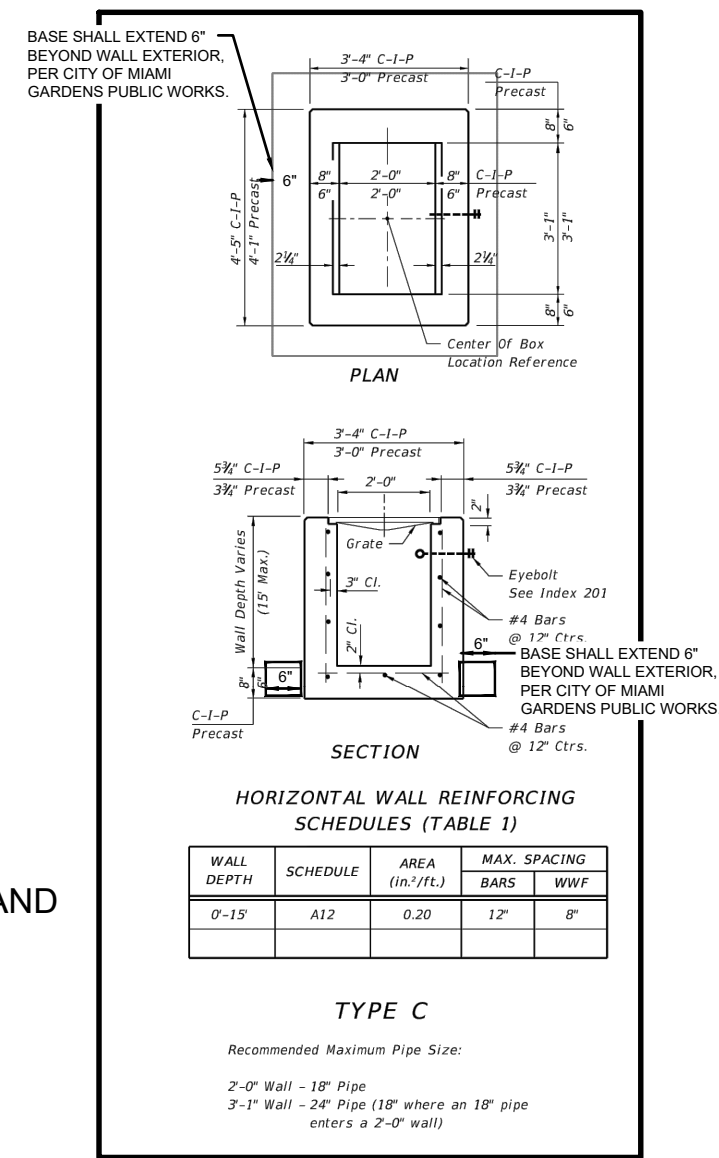


NOTE:

SEE FDOT INDEX 232 FOR COMPLETE DETAIL, NOTES AND SPECIFICATIONS.

**FDOT TYPE C INLET**

N.T.S.



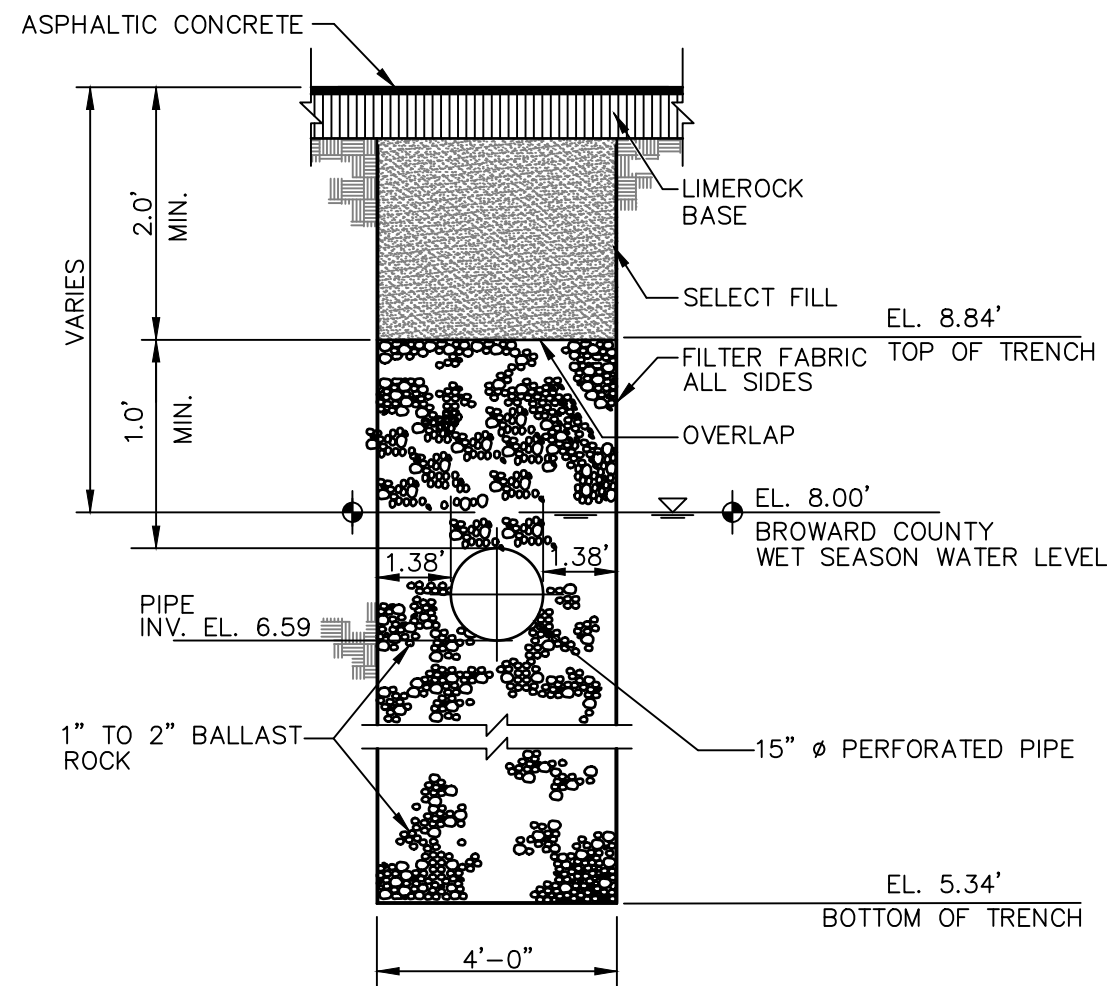
WALL SCHEDULE	AREA (SQ. FT.)	MAX. SPACING (IN. ON CTR.)	WALL WTH.
0-15	A12	0.20	12"
			8"

TYPE C  
Recommended Maximum Pipe Size:  
2'-0" Wall - 18" Pipe  
2'-4" Wall - 24" Pipe (18" where an 18" pipe enters a 2'-0" wall)

**ELEVATIONS NOTE:**

ELEVATIONS ARE RELATIVE TO THE NORTH AMERICAN VERTICAL DATUM OF 1988 (NAVD88) AND ARE BASED ON THE BROWARD COUNTY BENCHMARK #2602752C.

REFER TO BOUNDARY AND TOPOGRAPHIC SURVEY CONDUCTED BY MILLER LEGG.

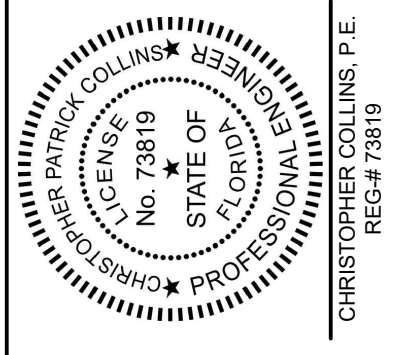


NOTE: FILTER FABRIC PER FDOT INDEX NO. 199

**18" EXFILTRATION TRENCH SECTION (NW 27 AVE)**

N.T.S.

10800 BISCAYNE BLVD.  
SUITE 935  
MIAMI, FL 33161  
Phone: 305.720.2079  
C.O.A. 33221



10/15/2025

This item has been digitally signed and sealed by Christopher P. Collins, P.E. on the date adjacent to the seal.

Printed copies of this document are not considered signed and sealed and the signature must be verified on any electronics copies.

Revision Date

Comment

Revision Date

Comment

Revision Date

Comment

Revision Date

Comment

Revision Date

Comment

Revision Date

Comment

Revision Date

Comment

Designed by:

C.P.C.

Drawn by:

A.T.S.

Checked by:

C.P.C.

Approved by:

C.P.C.

Scale:

N.T.S.

Date:

05/25/2022

Job No.:

1002

© 2025

Plans for

**FESTIVAL  
MARKETPLACE**

2900 W SAMPLE ROAD  
POMPANO BEACH,  
FLORIDA

**GRADING &  
DRAINAGE  
DETAILS**

Sheet No.

**C-9.0**



Call 811 or visit sunshine811.com two full business days before digging to have buried facilities located and marked.  
Check positive response codes before you dig!